

ABUJARDAR BUSH HAMMER TOOLING

The tools to create
a safer non-slip
surface.

PeterFell
TEXTURE SAFE SYSTEM



Contents

1.	PeterFell Texture Safe System.	3
2.	Handheld bush hammer tooling.	6
3.	Planetary bush hammer tooling.	14
4.	Pneumatic tooling.	23
5.	Texture protections.	24
6.	Care and maintenance.	25
	Disclaimer.	27

SECTION 1

A safe, non-slip textured surface for virtually any environment.

The PeterFell Texture Safe System allows you to create an even, non-slip texture for a range of applications, from residential pool surrounds to public spaces with high foot traffic.

Texture Safe isn't an applied anti-slip application. It's a permanent texture that's created to the concrete's surface, using **Abujardar bush hammer tooling**.

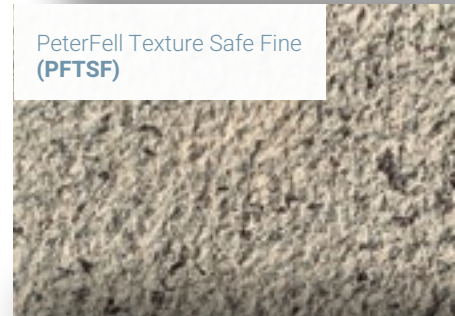
Because it's an integral part of the concrete, the texture will last, ensuring your surface remains safe, slip-free and looking great for generations.

The specialised Abujardar tooling is long-lasting too. You can be confident of achieving quality results year after year with the same tools.

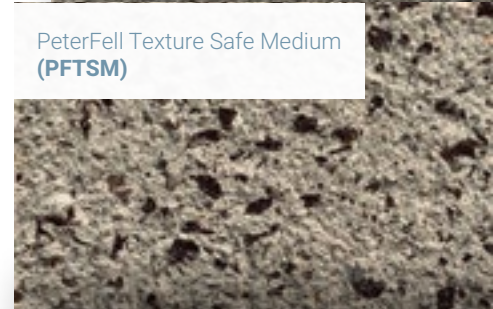
Versatility is another key benefit of Abujardar bush hammer tooling. The tools can be used on concrete old and new – and not just on horizontal surfaces. It's equally effective on pre-cast walls and other vertical surfaces and can be applied to granite, marble and masonry.

Depending on the look you want to achieve, you can choose from the wide range of Abujardar tooling textures. Right images are examples of the PFL Texture Safe Fine, Medium and Coarse textures.

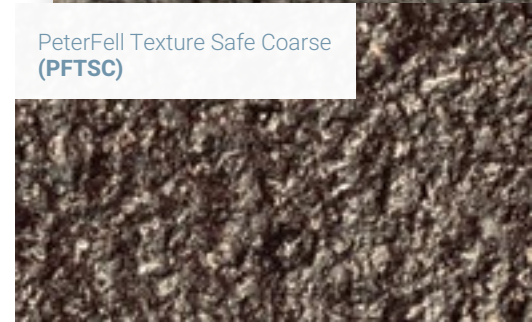
PeterFell Texture Safe Fine
(PFTSF)



PeterFell Texture Safe Medium
(PFTSM)



PeterFell Texture Safe Coarse
(PFTSC)





On the following pages you'll find the **Abujardar bush hammer tooling** that's perfectly suited to your project, from spacious warehouse floors to the tightest of corners.

If you'd like to discuss a specific application – and the best tooling for the job, call us on **0800 422 65687**.
Or visit [peterfell.co.nz](https://www.peterfell.co.nz).



Right from the start, our dealings with Paul, from PeterFell have been second to none.

The team is super responsive, items are received in a timely manner, and the products' quality is first class.

Would not go anywhere else!

Rhiannon

Owner Operator | Crete of Envy

SECTION 2

Handheld bush hammer tooling.



2.1	D.150mm integrated plate tooling	7
2.2a	Mini Unic tooling	8
2.2b	Mini Unic spares & parts	9
2.3a	RPCA tooling	10
2.3b	RPCA spares & parts	11
2.4a	RPPS tooling	12
2.4b	RPPS spares & parts	13
2.5	Specialised tooling	14

All of our handheld bush hammer tooling are made to fit **Makita SA7000C**.

2.1 D.150mm integrated plate tooling.



45-15012
Dust shroud D.150mm
NZ\$**414**



21-31267
**Spare D.150mm
Screw Axle**
NZ\$**16.15**



45-40100
Handle
NZ\$**145**



31-11217
D.150mm Spare roller kit
NZ\$**112**



71-00002
**Integrated D.150mm/
G18 coarse
CSP 5-6**
NZ\$**1,511**



71-00086
**Integrated D.150mm/
G30 medium
CSP 4-5**
NZ\$**1,573**



71-00087
**Integrated D.150mm/
G48 fine
CSP 3-4**
NZ\$**1,635**



71-00088
**Integrated D.150mm/
G270 micro sandblast**
NZ\$**2,443**



42-11035D
**D.150mm/G18
spare roller
CSP 5-6**
NZ\$**228**



42-11037D
**D.150mm/G30
spare roller
CSP 4-5**
NZ\$**248**



42-11040D
**D.150mm/G48
spare roller
CSP 3-4**
NZ\$**269**



42-11014D
**D.150mm/G270
spare roller**
NZ\$**538**

All of our handheld bush hammer tooling are made to fit **Makita SA7000C**. PeterFell recommends replacing the axles with new ones when fitting spare rollers.
Pricing as of 1 March 2023. All pricing excludes GST and any freight ex PeterFell Auckland Head Office – contact **0800 422 65687** or **info@peterfell.co.nz** for a delivered quotation.

2.2a Mini Unic tooling.



45-40204
Mini Unic dust shroud
 NZ\$**393**



45-40100
Handle
 NZ\$**145**



61-15310
Mini Unic D.150mm plate
 NZ\$**994**



41-26013
Mini Unic G36 roller
 CSP 5-6
 NZ\$**311**



41-26012
Mini Unic 2C50 roller
 CSP 4-5
 NZ\$**435**



41-26016
Mini Unic G500 roller
 NZ\$**414**

All of our handheld bush hammer tooling are made to fit **Makita SA7000C**. PeterFell recommends replacing the axles with new ones when fitting spare rollers.
 Pricing as of 1 March 2023. All pricing excludes GST and any freight ex PeterFell Auckland Head Office – contact **0800 422 65687** or **info@peterfell.co.nz** for a delivered quotation.

2.2b Mini Unic spares & parts.



42-26007
G36 spare roller
CSP 5-6

NZ\$**311**



42-26012
2C50 spare roller
CSP 4-5

NZ\$**435**



42-26016
G500 spare roller

NZ\$**311**



31-26002
Casing

NZ\$**116**



44-50326
Silent block

NZ\$**62**



31-26003
Cap

NZ\$**21**



33-06202
Bearing

NZ\$**20**



32-00017
O ring

NZ\$**2.75**



23-12012
Nut

NZ\$**1.55**



21-20820
Screw

NZ\$**0.60**

2.3a RPCA tooling.



45-15014
Dust shroud D.115mm

NZ\$331



44-10903
RPCA D.90mm
R3 plate

NZ\$269



45-40100
Handle

NZ\$145



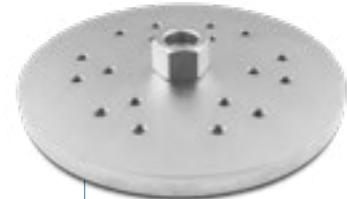
45-15012
Dust shroud D.150mm

NZ\$414



44-11504
RPCA D.150mm
R4 plate

NZ\$331



44-11506
RPCA D.150mm
R6 plate

NZ\$393



41-24317
RPCA
G16 roller
CSP 5-6

NZ\$248



41-24321
RPCA
G20 roller
CSP 4-5

NZ\$248



41-24331
RPCA
G30 roller
CSP 3-4

NZ\$248



41-24367
RPCA medium
sandblast roller

NZ\$248



41-24365
RPCA G165 micro
sandblast roller

NZ\$248

All of our handheld bush hammer tooling are made to fit **Makita SA7000C**. PeterFell recommends replacing the axles with new ones when fitting spare rollers.
Pricing as of 1 March 2023. All pricing excludes GST and any freight ex PeterFell Auckland Head Office – contact **0800 422 65687** or **info@peterfell.co.nz** for a delivered quotation.

2.3b RPCA spares & parts.



42-24317
**RPCA G16
spare roller**
CSP 5-6
NZ\$**166**



42-24321
**RPCA G20
spare roller**
CSP 4-5
NZ\$**166**



42-24331
**RPCA G30
spare roller**
CSP 3-4
NZ\$**166**



42-24367
**RPCA medium
sandblast spare roller**
NZ\$**166**



42-24365
**RPCA G165 micro
sandblast spare roller**
NZ\$**166**



31-24311
RPCA spare housing
NZ\$**101**



24-43026
Circlip
NZ\$**0.65**



31-24322
Front cap
NZ\$**6.40**



21-20635
Screw
NZ\$**0.70**



23-13008
Nut
NZ\$**1.90**



31-24321
Interior cap
NZ\$**3.50**



33-00608
Bearing
NZ\$**16**



31-24308
Axle
NZ\$**15**



32-31218
Oil seal
NZ\$**3.45**



23-22251
O ring
NZ\$**0.85**

All of our handheld bush hammer tooling are made to fit **Makita SA7000C**. PeterFell recommends replacing the axles with new ones when fitting spare rollers.
Pricing as of 1 March 2023. All pricing excludes GST and any freight ex PeterFell Auckland Head Office – contact **0800 422 65687** or **info@peterfell.co.nz** for a delivered quotation.

2.4a RPPS tooling.



**Set up example RPPS
Rollers fit D.150mm
R4 Plate**

ref: 44-11504 page 10



41-21318
**RPPS
G18 roller**
CSP 5-6

NZ\$**311**



41-21330
**RPPS
G30 roller**
CSP 4-5

NZ\$**331**



41-21348
**RPPS
G48 roller**
CSP 3-4

NZ\$**352**



41-21390
**RPPS
G90 roller**
CSP 2-3

NZ\$**455**

All of our handheld bush hammer tooling are made to fit **Makita SA7000C**. PeterFell recommends replacing the axles with new ones when fitting spare rollers.
Pricing as of 1 March 2023. All pricing excludes GST and any freight ex PeterFell Auckland Head Office – contact **0800 422 65687** or **info@peterfell.co.nz** for a delivered quotation.

2.4b RPPS Spare & Parts.



42-21318
RPPS G18
 spare roller
 CSP 5-6

NZ\$**207**



42-21330
RPPS G30
 spare roller
 CSP 4-5

NZ\$**228**



42-21348
RPPS G48
 spare roller
 CSP 3-4

NZ\$**248**



42-21390
RPPS G90
 spare roller
 CSP 2-3

NZ\$**352**



33-R6000
 NZ\$**23**



24-43026
 NZ\$**0.65**



21-11045
 NZ\$**15**



21-20640
 NZ\$**0.70**



31-21302
 NZ\$**104**



31-21304
 NZ\$**17**

All of our handheld bush hammer tooling are made to fit **Makita SA7000C**. PeterFell recommends replacing the axles with new ones when fitting spare rollers.
 Pricing as of 1 March 2023. All pricing excludes GST and any freight ex PeterFell Auckland Head Office – contact **0800 422 65687** or **info@peterfell.co.nz** for a delivered quotation.

2.5 Specialised tooling.



45-40302

Universal head & guide**NZ\$1,760**

45-10200

D.90mm deepness regulator**NZ\$414**

45-10103

Aluminium cap connector**NZ\$145**

All of our handheld bush hammer tooling are made to fit **Makita SA7000C**. PeterFell recommends replacing the axles with new ones when fitting spare rollers.
Pricing as of 1 March 2023. All pricing excludes GST and any freight ex PeterFell Auckland Head Office – contact **0800 422 65687** or **info@peterfell.co.nz** for a delivered quotation.



We used other bush hammer tooling with poor results and frustrating breakages.

We tried Abujardar tooling, and wow, what results we are having, the tooling quality, range and finish it offers are awesome.

Clients love it and so do we!

Carlos Hedge

Director | Contract Flooring

SECTION 3

Planetary bush hammer tooling.



3.1a	Quick Change plates tooling	17
3.1b	Quick Change plates spares & parts	18
3.2a	Integrated plates tooling	19
3.2b	Integrated plates spares & parts	20
3.3	G36 medium texture tooling	21
3.4a	Conversion plates	22
3.4b	Conversion plates spares & parts	23

3.1a Quick Change plates tooling.



61-22037
HTC 270
Quick Change plate

NZ\$**745**



61-22039
HTC 230
Quick Change plate

NZ\$**455**



61-22040
Husqvarna 270
Quick Change plate

NZ\$**828**



61-22041
Husqvarna 230
Quick Change plate

NZ\$**580**



43-60010
G36 Quick Change
cartridge/roller
CSP 5-6

NZ\$**435**



43-60012
G60 Quick Change
cartridge/roller
CSP 4-5

NZ\$**435**



43-60014
G108 Quick Change
cartridge/roller
CSP 3-4

NZ\$**476**



43-60015
G125 Quick Change
cartridge/roller
CSP 2-3

NZ\$**559**



43-60018
G800 Quick Change
cartridge/roller

NZ\$**476**



43-60019
G1400 Quick Change
cartridge/roller

NZ\$**476**



43-60020
G2000 Quick Change
cartridge/roller

NZ\$**476**

3.1b Quick Change plates spares & parts.



42-60002
**G36 Quick Change
spare roller***
CSP 5-6

NZ\$269



42-60004
**G60 Quick Change
spare roller***
CSP 4-5

NZ\$269



42-60005
**G108 Quick Change
spare roller***
CSP 3-4

NZ\$311



42-60006
**G125 Quick Change
spare roller***
CSP 2-3

NZ\$393



42-60009
**G800 Quick Change
spare roller***

NZ\$311



42-60010
**G1400 Quick Change
spare roller***

NZ\$311



42-60011
**G2000 Quick Change
spare roller***

NZ\$311

* Rollers do not include axle nut & bolt



31-14341
**Quick Change spare
cartridge holder**

NZ\$62



31-11296
**4 bearings &
2 oil seals**

NZ\$104



21-11217
Axle nut & bolt

NZ\$16

3.2a Integrated plates tooling.



71-00000
Single Head Integrated
D.300mm R6

NZ\$1,242



71-00006
Integrated
D.230mm R3

NZ\$911



71-00028
HTC Integrated base
D.230mm R3

NZ\$352



61-30010
Husqvarna Integrated base
D.230mm R3

NZ\$311



42-50365
G36 Integrated
roller
CSP 5-6

NZ\$269



42-50604
G60 Integrated
roller
CSP 4-5

NZ\$269



42-51084
G108 Integrated
roller
CSP 3-4

NZ\$311



42-52004
G200 Integrated
roller
CSP 2-3

NZ\$538



42-50002
Medium sandblast
Integrated roller
CSP 1-2

NZ\$311

3.2b Integrated plates spares & parts.



32-51832

Integrated roller dust capNZ\$**6.20**

33-06201

BearingNZ\$**23**

21-11217

Axle nut & boltNZ\$**16**

31-11291

Side coverNZ\$**12**

44-50332

Husqvarna sound blockNZ\$**14**

44-50324

HTC sound blockNZ\$**14**

3.3 G36 medium texture tooling.



44-15000
HTC D.230mm plate
NZ\$311



41-27001
G36 roller
CSP 4-5
NZ\$311



61-30002
Husqvarna D.230mm plate
NZ\$455

3.4a Conversion plates.



CON-85512300
HTC D.270mm conversion plate
 NZ\$**320**



CON-85512301
HTC D.230mm conversion plate
 NZ\$**284**



CON-85512302
Husqvarna D.270mm conversion plate
 NZ\$**297**



CON-85512303
Husqvarna D.230mm conversion plate
 NZ\$**284**

3.4b Conversion plates spares & parts.



ABU Holder
Quick Change holder

NZ\$45



42-21350
G48 spare roller

NZ\$269



ABU Holder BN
Axle nut & bolt

NZ\$8



31-11292
Side cap

NZ\$5.70



45-70677
**Lav50mm
cartridge holder**

NZ\$124



43-70302
**Lav50mm QC G18
cartridge/roller/
CSP 5-6**

NZ\$352



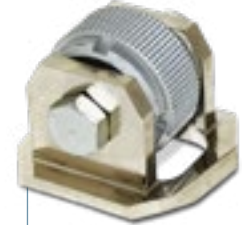
43-70301
**Lav50mm QC G30
cartridge/roller
CSP 4-5**

NZ\$373



43-70300
**Lav50mm QC G48
cartridge/roller
CSP 3-4**

NZ\$393



43-70303
**Lav50mm QC G270
cartridge/roller**

NZ\$704



31-11217
**D.150mm
Spare roller kit**

NZ\$112



21-11262
**Lav QC
Spare Axle & nut**

NZ\$16



42-70302
**Lav50mm
G18 spare roller
CSP 5-6**

NZ\$228



42-70301
**Lav50mm
G30 spare roller
CSP 4-5**

NZ\$248



42-70300
**Lav50mm
G48 spare roller
CSP 3-4**

NZ\$269



42-70303
**Lav50mm
G270 spare roller**

NZ\$538



Grindking were the early adopters of Abujardar tooling in NZ, we worked closely with PeterFell trialling several of the ranges,

I can't speak more highly about the quality and how we have completely changed our external finishes offer for the better with this tooling.

It has given our company so many new opportunities and our repeat business speaks for itself.

Garth Urquhart

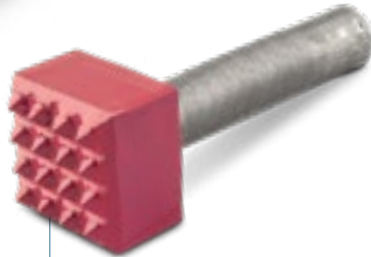
Director | Grindking

SECTION 4

Pneumatic tooling.



51-10131
Pneumatic hammer
NZ\$1,014



52-10936
Bushing chisel square 16t
NZ\$129



52-10915
Bushing chisel round 16t
NZ\$129

SECTION 5

Texture protections.

There are three types of protective finishes that can be applied in the PeterFell Texture Safe System: **natural finish**, **wet-look gloss finish** and **wet-look matt finish**.

The natural finish can be applied to all texture options. In this finish, the surface is first treated with our lithium silicate densifier (C2 Hard), increasing surface hardness and durability. The penetrating sealer **PFL Texture Seal Natural** is then applied, protecting the surface from ingress of dirt and soil without altering the surface texture or appearance.

The other two finishes will offer a hard wearing surface protection with an enhanced 'wet-look' finish. The textured surface, with the exception of the fine texture (PFTSF), is treated with either **PFL Texture Seal Gloss** for a gloss finish, or **PFL Texture Seal Matt** for a matt finish. These two sealers offer excellent protection from staining and marking, making the textured surface easy to clean and maintain.



PFL Texture Seal natural

NZ\$369.60

PFL Texture Seal gloss

NZ\$288.75

PFL Texture Seal matt

NZ\$311.85

Note: PFL Texture Seal NATURAL Sealer is the only protection that can be used on fine surfaces textured with PeterFell Texture Safe (PFTSF) finishes. PFL Texture Seal GLOSS and PFL Texture Seal MATT reduce the slip-resistance on the fine texture only and subsequently cannot be applied. All pricing excludes GST and any freight ex PeterFell Auckland Head Office.

SECTION 6

Care and maintenance.

We've put together some maintenance tips to help ensure you continue to gain maximum benefit from your Abujardar Tooling.



Handheld machine (Makita SA7000C).

This quality European made tooling is manufactured to run on a **Makita SA7000C variable speed machine**. This machine takes all handheld shrouds, handles, Integrated D.150, Mini Unic and RPCA tooling.

Speed setting.

Select speed setting 4 when you use Abujardar tooling on a Makita SA7000C variable speed machine.

Operation.

Make sure the tooling is connected snugly to the machine. Don't overtighten the attachment screws and always connect a code-compliant dust extraction vacuum. Start the machine in the air and then lower it onto the surface and work in circular motions.

Testing.

Different surfaces have different strengths. We recommend that you test an area with your tooling before proceeding with the whole project. Soft concrete may need a densifier to harden before you texture it.

After care.

Clean your tooling by brushing, wiping or blowing away any residual dust after you've completed the project. Regular cleaning helps stop dust from working into the edges of the rollers. Once you've finished cleaning, apply a small amount of WD40/CRC lubricant to each bolt.

Check existing rollers.

Before each project, check that pre-used rollers:

- Spin freely;
- Have no broken tips; and
- Have all parts operating correctly.

Always keep spare rollers with you so that you don't have to stop a project because of wear and tear.

Replacement spare parts for most handheld tooling can be ordered from peterfell.co.nz/products/texture-safe-bush-hammer-tooling/



Single Head and Planetary machines.

Abujardar Single Head and Planetary tooling plates and rollers are designed to fit many different types of grinding machines. These include HTC, Husqvarna, Lavina, Artizan, Blastrac and Klindex. You may need to make some adjustments to the shroud height and wheels depending on the tooling you're fitting.

Contact your PeterFell representative to talk about your tooling setup.

Checklist for rollers maintenance.

We recommend that you do these basic checks on new and used rollers before starting a project with your Abujardar handheld tooling.

- Ensure the rollers are dust free.
- Ensure the bearings are spinning freely. Replace the bearings when required.
- Check that there is no excessive sideways movement in the bearing (and replace when required).
- Check for excessive broken tips.

Bolts can warp from the heat that's caused by prolonged texturing. We recommend therefore that you replace the roller running bolts when you're fitting new rollers onto Quick Change, Integrated or Conversion plates.

You can order replacement spare parts for planetary and single head machine tooling at peterfell.co.nz/products/texture-safe-bush-hammer-tooling/

If you'd like to know more about the care and maintenance of Abujardar handheld tooling call us on **0800 422 65687**.



We did a lot of research on bush hammer tooling before settling on Abujardar tooling.

It is top quality tooling built to last. Minimum maintenance, hard wearing with good service life providing an excellent return on investment.

We wouldn't utilise any other tooling and can highly recommend.

Mike Farrell

Farrell Concrete Grinding

Disclaimer.

The Abujardar handheld tooling is designed to texture flat or slightly undulated surfaces. Running tooling over edges, hitting objects and excessive downward pressure are likely to cause damage to the rollers and running parts. PeterFell will not accept returns or replace broken Abujardar tooling that is the result of misuse or being poorly fitted. Please note too that PeterFell will only provide a warranty for Abujardar handheld tooling that is fitted to a Makita SA7000C machine.

All prices are subject to change without notice and are not guaranteed, except those prices for an order that have been accepted by Peter Fell Limited. Prices (provided by way of a Quotation or a Price List) are subject to change to the prices in effect at the time of delivery. Peter Fell Limited reserves the right to make any corrections to prices quoted due to clerical errors or errors of omission. In the event of any specific requirements (including without limitation any design, specification, ordered quantity, or shipment changes) representing a price increase, the Buyer will be notified and afforded an opportunity to confirm.

Contact us to discuss
about PeterFell
Texture Safe System
application or the best
bush hammer tooling
for the job.

Phone

0800 422 65687

Email

info@peterfell.co.nz

Visit our Auckland Showroom

81 Patiki Road

Rosebank, Auckland

PeterFell
TEXTURE SAFE SYSTEM

peterfell.co.nz

