



ABUJARDAR BUSH HAMMER TOOLING

The tools to create
a safer non-slip
surface.

PeterFell
TEXTURE SAFE SYSTEM



Contents

1.	PeterFell Texture Safe System.	3
2.	Handheld bush hammer tooling.	5
3.	Planetary bush hammer tooling.	13
4.	Pneumatic tooling.	21
5.	Texture protections.	22
6.	Care and maintenance.	23
	Disclaimer.	25

SECTION 1

A safe, non-slip textured surface for virtually any environment.

The PeterFell Texture Safe System allows you to create an even, non-slip texture for a range of applications, from residential pool surrounds to public spaces with high foot traffic.

Texture Safe isn't an applied anti-slip application. It's a permanent texture that's created to the concrete's surface, using **Abujardar bush hammer tooling**.

Because it's an integral part of the concrete, the texture will last, ensuring your surface remains safe, slip-free and looking great for generations.

The specialised Abujardar tooling is long-lasting too. You can be confident of achieving quality results year after year with the same tools.

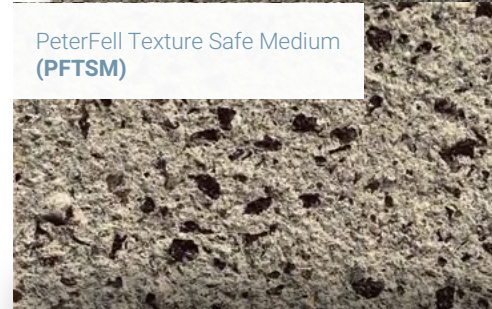
Versatility is another key benefit of Abujardar bush hammer tooling. The tools can be used on concrete old and new – and not just on horizontal surfaces. It's equally effective on pre-cast walls and other vertical surfaces and can be applied to granite, marble and masonry.

Depending on the look you want to achieve, you can choose from the wide range of Abujardar tooling textures. Right images are examples of the PFL Texture Safe Fine, Medium and Coarse textures.

PeterFell Texture Safe Fine
(PFTSF)



PeterFell Texture Safe Medium
(PFTSM)



PeterFell Texture Safe Coarse
(PFTSC)





On the following pages you'll find the **Abujardar bush hammer tooling** that's perfectly suited to your project, from spacious warehouse floors to the tightest of corners.

If you'd like to discuss a specific application – and the best tooling for the job, call us on **0800 422 65687**.
Or visit **peterfell.co.nz**.

SECTION 2

Handheld bush hammer tooling.



2.1	Mini Unic full set-up	6
2.2a	Mini Unic tooling	8
2.2b	Mini Unic spares & parts	9
2.3a	RPCA tooling	10
2.3b	RPCA spares & parts	11
2.4	Specialised tooling	12

All of our handheld bush hammer tooling are made to fit **Makita SA7000C**.

2.1 Mini Unic full set-up.



**Mini Unic full set-up
example - G12**

Price includes Makita SA7000C

Extra coarse texture

NZ\$2,975



61-15318

**Plate 150mm/3 Mini G12
CSP 2-3**

NZ\$1,732



41-26009

**Mini Unic
Roller G12
CSP 2-3**

NZ\$338



**Mini Unic full set-up
example - G36**

Price includes Makita SA7000C

Coarse texture

NZ\$2,975



61-15312

**Plate 150mm/3 Mini G36
CSP 3-4**

NZ\$1,732



41-26013

**Mini Unic
Roller G36
CSP 3-4**

NZ\$338

All of our handheld bush hammer tooling are made to fit **Makita SA7000C**. PeterFell recommends replacing the axles with new ones when fitting spare rollers.

Pricing as of 1 April 2025. All pricing excludes GST and any freight ex PeterFell Auckland Head Office – contact **0800 422 65687** or **info@peterfell.co.nz** for a delivered quotation.

2.1 Mini Unic full set-up.



Mini Unic full set-up example - G50

Price includes Makita SA7000C

Medium texture

NZ\$3,105



61-15314

**Plate 150mm/3 Mini G50
CSP 5-6**

NZ\$1,862



41-26019

**Mini Unic
Roller G50
CSP 5-6**

NZ\$381



Mini Unic full set-up example - G90

Price includes Makita SA7000C

Fine texture

NZ\$3,170



61-15316

**Plate 150mm/3 Mini G90
CSP 6-7**

NZ\$1,927



41-26017

**Mini Unic
Roller G90
CSP 6-7**

NZ\$403

All of our handheld bush hammer tooling are made to fit **Makita SA7000C**. PeterFell recommends replacing the axles with new ones when fitting spare rollers.

Pricing as of 1 April 2025. All pricing excludes GST and any freight ex PeterFell Auckland Head Office – contact **0800 422 65687** or **info@peterfell.co.nz** for a delivered quotation.

2.2a Mini Unic tooling.



45-40204
Mini Unic dust shroud
NZ\$**541**



45-40100
Handle
NZ\$**152**



61-15310
Mini Unic D.150mm plate
NZ\$**714**



42-26009
**Mini Unic
G12 spare roller
CSP 2-3**
NZ\$**230**



42-26007
**Mini Unic
G36 spare roller
CSP 3-4**
NZ\$**230**



42-26013
**Mini Unic
G50 spare roller
CSP 5-6**
NZ\$**273**



42-26017
**Mini Unic
G90 spare roller
CSP 6-7**
NZ\$**294**

All of our handheld bush hammer tooling are made to fit **Makita SA7000C**. PeterFell recommends replacing the axles with new ones when fitting spare rollers.
Pricing as of 1 April 2025. All pricing excludes GST and any freight ex PeterFell Auckland Head Office – contact **0800 422 65687** or **info@peterfell.co.nz** for a delivered quotation.

2.2b Mini Unic spares & parts.



31-26002
Casing
NZ\$**121**



44-50326
Silent block
NZ\$**64.95**



31-26003
Cap
NZ\$**21.65**



33-06202
Bearing
NZ\$**21.20**



23-12012
Nut
NZ\$**1.80**



21-20820
Screw
NZ\$**0.65**

All of our handheld bush hammer tooling are made to fit **Makita SA7000C**. PeterFell recommends replacing the axles with new ones when fitting spare rollers.
Pricing as of 1 April 2025. All pricing excludes GST and any freight ex PeterFell Auckland Head Office – contact **0800 422 65687** or **info@peterfell.co.nz** for a delivered quotation.

2.3a RPCA tooling.



45-15014
Dust shroud D.115mm

NZ\$**368**



44-10903
**RPCA D.90mm
R3 plate**

NZ\$**281**



45-40100
Handle

NZ\$**152**



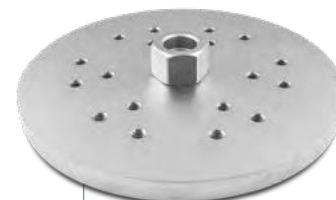
45-15012
Dust shroud D.150mm

NZ\$**541**



44-11504
**RPCA D.150mm
R4 plate**

NZ\$**346**



44-11506
**RPCA D.150mm
R6 plate**

NZ\$**411**



41-24317
**RPCA
G16 roller
CSP 5-6**

NZ\$**281**



41-24321
**RPCA
G20 roller
CSP 4-5**

NZ\$**281**



41-24331
**RPCA
G30 roller
CSP 3-4**

NZ\$**281**



41-24367
**RPCA medium
sandblast roller**

NZ\$**281**



41-24365
**RPCA G165 micro
sandblast roller**

NZ\$**281**

All of our handheld bush hammer tooling are made to fit **Makita SA7000C**. PeterFell recommends replacing the axles with new ones when fitting spare rollers.

Pricing as of 1 April 2025. All pricing excludes GST and any freight ex PeterFell Auckland Head Office – contact **0800 422 65687** or **info@peterfell.co.nz** for a delivered quotation.

2.3b RPCA spares & parts.



42-24317
**RPCA G16
spare roller
CSP 5-6**
NZ\$**195**



42-24321
**RPCA G20
spare roller
CSP 4-5**
NZ\$**195**



42-24331
**RPCA G30
spare roller
CSP 3-4**
NZ\$**195**



42-24367
**RPCA medium
sandblast spare roller**
NZ\$**195**



42-24365
**RPCA G165 micro
sandblast spare roller**
NZ\$**195**



31-24311
RPCA spare housing
NZ\$**106**



24-43026
Circlip
NZ\$**0.70**



31-24322
Front cap
NZ\$**8.65**



21-20635
Screw
NZ\$**0.75**



23-13008
Nut
NZ\$**2**



31-24321
Interior cap
NZ\$**3.70**



33-00608
Bearing
NZ\$**16.95**



31-24308
Axle
NZ\$**16.10**



32-31218
Oil seal
NZ\$**4.35**



23-22251
O ring
NZ\$**0.90**

All of our handheld bush hammer tooling are made to fit **Makita SA7000C**. PeterFell recommends replacing the axles with new ones when fitting spare rollers.
Pricing as of 1 April 2025. All pricing excludes GST and any freight ex PeterFell Auckland Head Office – contact **0800 422 65687** or **info@peterfell.co.nz** for a delivered quotation.

2.4 Specialised tooling.



45-40302

Universal head & guide**NZ\$2,014**

45-10200

D.90mm deepness regulator**NZ\$476**

45-10103

Aluminium cap connector**NZ\$152**

All of our handheld bush hammer tooling are made to fit **Makita SA7000C**. PeterFell recommends replacing the axles with new ones when fitting spare rollers.
Pricing as of 1 April 2025. All pricing excludes GST and any freight ex PeterFell Auckland Head Office – contact **0800 422 65687** or **info@peterfell.co.nz** for a delivered quotation.

SECTION 3

Planetary bush hammer tooling.



3.1a	Quick Change plates tooling	14
3.1b	Quick Change plates spares & parts	15
3.2a	Integrated plates tooling	17
3.2b	Integrated plates spares & parts	18
3.3	G36 medium texture tooling	19
3.4a	Conversion plates	20

3.1a Quick Change plates tooling.



61-22037
HTC 270
Quick Change plate
NZ\$**823**



61-22039
HTC 230
Quick Change plate
NZ\$**628**



61-22040
Husqvarna 270
Quick Change plate
NZ\$**866**



61-22041
Husqvarna 230
Quick Change plate
NZ\$**606**



43-60009
G24 Quick Change
cartridge/roller
CSP 2-3
NZ\$**489**



43-60010
G36 Quick Change
cartridge/roller
CSP 3-4
NZ\$**533**



43-60012
G60 Quick Change
cartridge/roller
CSP 4-5
NZ\$**520**



43-60014
G108 Quick Change
cartridge/roller
CSP 5-6
NZ\$**606**



43-60015
G125 Quick Change
cartridge/roller
CSP 5-7
NZ\$**650**



43-60016
G200 Quick Change
cartridge/roller
CSP 5-7
NZ\$**844**



43-60025
G270 Quick Change
cartridge/roller
CSP 6-8
NZ\$**996**

All of our planetary bush hammer tooling are made to fit **HTC or Husqvarna machines**. PeterFell recommends replacing the axles with new ones when fitting spare rollers.
Pricing as of 1 April 2025. All pricing excludes GST and any freight ex PeterFell Auckland Head Office – contact **0800 422 65687** or **info@peterfell.co.nz** for a delivered quotation.

3.1b Quick Change plates spares & parts.



42-60001
**G24 Quick Change
spare roller***
CSP 2-3

NZ\$316



42-60002
**G36 Quick Change
spare roller***
CSP 3-4

NZ\$359



42-60004
**G60 Quick Change
spare roller***
CSP 4-5

NZ\$346



42-60005
**G108 Quick Change
spare roller***
CSP 5-6

NZ\$433



42-60006
**G125 Quick Change
spare roller***
CSP 5-7

NZ\$476



42-60007
**G200 Quick Change
spare roller***
CSP 5-7

NZ\$671

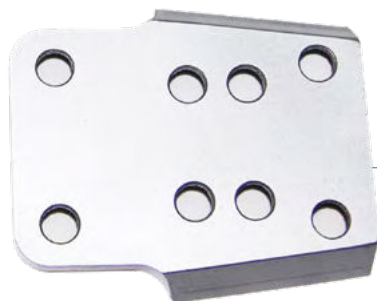


42-60015
**G270 Quick Change
spare roller***
CSP 6-8

NZ\$823

* Quick Change Spare roller pricing does not include replacement axle bolt and nuts

3.1b Quick Change plates spares & parts.



45-70671
**Quick Change
cartridge base**
NZ\$**108**



31-14341
**Quick Change spare
cartridge holder**
NZ\$**64.95** each



33-06201
Quick Change bearing
NZ\$**23.80** each



21-11217
**Quick Change
nut & bolt**
NZ\$**21.20**



32-61832
**Quick Change
oil seal**
NZ\$**6.50** each



31-11203
**Quick Change
lateral cap**
NZ\$**3.90** each



24-43035
**Quick Change
circlip**
NZ\$**2.15**



21-20820
**Quick Change
base screw**
NZ\$**0.65**

All of our planetary bush hammer tooling are made to fit **HTC or Husqvarna machines**. PeterFell recommends replacing the axles with new ones when fitting spare rollers.
Pricing as of 1 April 2025. All pricing excludes GST and any freight ex PeterFell Auckland Head Office – contact **0800 422 65687** or **info@peterfell.co.nz** for a delivered quotation.

3.2a Integrated plates tooling.



71-00000
**Single Head Integrated
D.300mm R6**

NZ\$1,212



71-00109
Integrated D.230mm R3

Includes:

- 3x 21-11211 bolts
- 3x 44-50324 sound blocks)

NZ\$563



71-00028
**HTC Integrated base
D.230mm R3**

NZ\$368



61-30010
**Husqvarna Integrated base
D.230mm R3**

NZ\$325



42-50365
**G36 Integrated
roller
CSP 5-6**

NZ\$359



42-50604
**G60 Integrated
roller
CSP 4-5**

NZ\$346



42-51084
**G108 Integrated
roller
CSP 3-4**

NZ\$433



42-52004
**G200 Integrated
roller
CSP 2-3**

NZ\$671



42-50002
**Medium sandblast
Integrated roller
CSP 1-2**

NZ\$411

3.2b Integrated plates spares & parts.



32-51832

Integrated roller dust capNZ\$**6.50**

33-06201

BearingNZ\$**23.80**

21-11211

Axle nut & boltNZ\$**21.20**

31-11291

Side coverNZ\$**13**

44-50332

Husqvarna sound blockNZ\$**23.80**

44-50324

HTC sound blockNZ\$**23.80**

3.3 G36 medium texture tooling.



44-15000
HTC D.230mm plate
NZ\$**325**



41-27001
G36 roller
CSP 4-5
NZ\$**338**



61-30002
Husqvarna D.230mm plate
NZ\$**433**

3.4 Conversion plates.



CON-85512300

HTC D.270mm conversion plate**NZ\$320**

CON-85512301

HTC D.230mm conversion plate**NZ\$284**

CON-85512302

Husqvarna D.270mm conversion plate**NZ\$297**

CON-85512303

Husqvarna D.230mm conversion plate**NZ\$284**

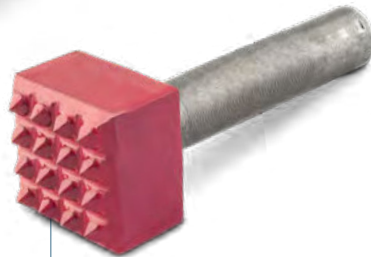
All of our planetary bush hammer tooling are made to fit **HTC or Husqvarna machines**. PeterFell recommends replacing the axles with new ones when fitting spare rollers.
Pricing as of 1 April 2025. All pricing excludes GST and any freight ex PeterFell Auckland Head Office – contact **0800 422 65687** or **info@peterfell.co.nz** for a delivered quotation.

SECTION 4

Pneumatic tooling.



51-10131
Pneumatic hammer
NZ\$1,247



52-10936
Bushing chisel square 16t
NZ\$168



52-10915
Bushing chisel round 16t
NZ\$168

SECTION 5

Texture protections.

There are three types of protective finishes that can be applied in the PeterFell Texture Safe System: **natural finish**, **wet-look gloss finish** and **wet-look matt finish**.

The natural finish can be applied to all texture options. In this finish, the surface is first treated with our lithium silicate densifier (C2 Hard), increasing surface hardness and durability. The penetrating sealer **PFL Texture Seal Natural** is then applied, protecting the surface from ingress of dirt and soil without altering the surface texture or appearance.

The other two finishes will offer a hard wearing surface protection with an enhanced 'wet-look' finish. The textured surface, with the exception of the fine texture (PFTSF), is treated with either **PFL Texture Seal Gloss** for a gloss finish, or **PFL Texture Seal Matt** for a matt finish. These two sealers offer excellent protection from staining and marking, making the textured surface easy to clean and maintain.



PFL Texture Seal natural

NZ\$369.60

PFL Texture Seal gloss

NZ\$288.75

PFL Texture Seal matt

NZ\$311.85

Note: PFL Texture Seal NATURAL Sealer is the only protection that can be used on fine surfaces textured with PeterFell Texture Safe (PFTSF) finishes. PFL Texture Seal GLOSS and PFL Texture Seal MATT reduce the slip-resistance on the fine texture only and subsequently cannot be applied. All pricing excludes GST and any freight ex PeterFell Auckland Head Office.

SECTION 6

Care and maintenance.

We've put together some maintenance tips to help ensure you continue to gain maximum benefit from your Abujardar Tooling.



Handheld machine (Makita SA7000C).

This quality European made tooling is manufactured to run on a **Makita SA7000C variable speed machine.**

This machine takes all handheld shrouds, handles, Integrated D.150, Mini Unic and RPCA tooling.

Speed setting.

Select speed setting 4 when you use Abujardar tooling on a Makita SA7000C variable speed machine.

Operation.

Make sure the tooling is connected snugly to the machine. Don't over-tighten the attachment screws and always connect a code-compliant dust extraction vacuum. Start the machine in the air and then lower it onto the surface and work in circular motions.

Testing.

Different surfaces have different strengths. We recommend that you test an area with your tooling before proceeding with the whole project. Soft concrete may need a densifier to harden before you texture it.

After care.

Clean your tooling by brushing, wiping or blowing away any residual dust after you've completed the project. Regular cleaning helps stop dust from working into the edges of the rollers. Once you've finished cleaning, apply a small amount of WD40/CRC lubricant to each bolt.

Check existing rollers.

Before each project, check that pre-used rollers:

- Spin freely;
- Have no broken tips; and
- Have all parts operating correctly.

Always keep spare rollers with you so that you don't have to stop a project because of wear and tear.



Single Head and Planetary machines.

Abujardar Single Head and Planetary tooling plates and rollers are designed to fit many different types of grinding machines. These include HTC, Husqvarna, Lavina, Artizan, Blastrac and Klindex. You may need to make some adjustments to the shroud height and wheels depending on the tooling you're fitting.

Contact your PeterFell representative to talk about your tooling setup.

Checklist for rollers maintenance.

We recommend that you do these basic checks on new and used rollers before starting a project with your Abujardar handheld tooling.

- Ensure the rollers are dust free.
- Ensure the bearings are spinning freely. Replace the bearings when required.
- Check that there is no excessive sideways movement in the bearing (and replace when required).
- Check for excessive broken tips.

Bolts can warp from the heat that's caused by prolonged texturing. We recommend therefore that you replace the roller running bolts when you're fitting new rollers onto Quick Change, Integrated or Conversion plates.

If you'd like to know more about the care and maintenance of Abujardar handheld tooling call us on **0800 422 65687**.



We did a lot of research on bush hammer tooling before settling on Abujardar tooling.

It is top quality tooling built to last. Minimum maintenance, hard wearing with good service life providing an excellent return on investment.

We wouldn't utilise any other tooling and can highly recommend.

Mike Farrell

Farrell Concrete Grinding

Disclaimer.

The Abujardar handheld tooling is designed to texture flat or slightly undulated surfaces. Running tooling over edges, hitting objects and excessive downward pressure are likely to cause damage to the rollers and running parts. PeterFell will not accept returns or replace broken Abujardar tooling that is the result of misuse or being poorly fitted. Please note too that PeterFell will only provide a warranty for Abujardar handheld tooling that is fitted to a Makita SA7000C machine.

All prices are subject to change without notice and are not guaranteed, except those prices for an order that have been accepted by Peter Fell Limited. Prices (provided by way of a Quotation or a Price List) are subject to change to the prices in effect at the time of delivery. Peter Fell Limited reserves the right to make any corrections to prices quoted due to clerical errors or errors of omission. In the event of any specific requirements (including without limitation any design, specification, ordered quantity, or shipment changes) representing a price increase, the Buyer will be notified and afforded an opportunity to confirm.

Contact us to discuss
about PeterFell
Texture Safe System
application or the best
bush hammer tooling
for the job.

Phone

0800 422 65687

Email

info@peterfell.co.nz

Visit our Auckland Showroom

81 Patiki Road
Rosebank, Auckland

PeterFell
TEXTURE SAFE SYSTEM

peterfell.co.nz

